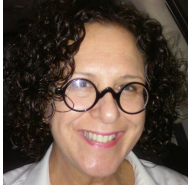




Visit our website



A Message from President Paula Hamp



Greetings!

October is Learning Disabilities Awareness Month. When it's time to renew your membership, consider donating to LDA-IA. Your membership and your generous donations help LDA-IA to get resources and connections to those in need.

I am often asked, what does LDA-IA do? Well, one thing we do is support the Every Child Succeeds Act (ESSA) and the Individuals with Disabilities Education Act (IDEA) which are two federal laws related to the education of children.

It's important that we understand the requirements of ESSA and IDEA and how the two laws work together to improve academic achievement of students with disabilities. The IDEA bill contained a promise 44 years ago that the federal government would fund 40 percent of the costs of implementing IDEA. Today, the government funds just 14.7 percent. With this knowledge, legislators have filed the IDEA Full Funding Act to fully fund IDEA by 2023.

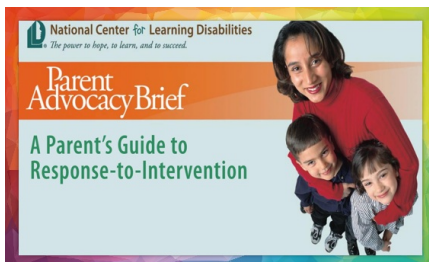
So how can you help? There are a several ways you can help. Encourage others to join LDA-IA, get involved and urge Congress to meet its 40% promise. You can learn more by going to the website [IDEA Money Watch](#). Contact your Congressmen today.

During the month of November, I challenge you to encourage two others to join LDA-IA and contact your Congressman to support the IDEA Full Funding Act.

Thank you for supporting LDA-IA!

~Paula

Just for Parents!



RTI:

- What is Response-to-intervention or RTI (also referred to as MTSS or Multi-Tiered System of Supports)?
- What are the benefits of RTI?
- What are the limitations of RTI, especially for those with Specific Learning Disabilities (SLD)?

Read this informative article to find out!

[A Parent's Guide to Response-to-Intervention](#)

Wrightslaw: *10 Tips About Special Education Placements* by Pat Howey

Thank you, Wrightslaw, for sharing this informative article. Pat Howey



does a great job of explaining some key components of the IEP and giving great advice!

Howey advises, "Do Not Put Placement Before the IEP. You must have an appropriate IEP before you can get an appropriate placement. Many parents make the mistake of putting the cart (the placement) before the horse (the IEP)."

Read more about it here: [10 Tips About Special Education Placements](#)

2019 LDA-IA Board of Directors

OFFICERS

President

- Paula Hamp, *Sioux City*

1st Vice-President

- Patty Beyer, *Holstein*

2nd Vice-President

- Gayle Slattery, *Dakota Dunes*

Secretary

- Theresa Stensland, *Cedar Falls*

Treasurer

- Shirley Sinnott, *Waterloo*

Past President

- Vicki Goshon, *Cedar Falls*

DIRECTORS

- Helen Beneke, *Pocahontas*
- Amy Eaton, *Urbandale*
- Kim Miller, *Cedar Falls*
- Dr. Richard Owens, *Sioux City*
- Verlee Owens, *Sioux City*
- Joe Rosener, *Marcus*
- Barbara Van Sickle, *Indianola*

October is LD Awareness Month!



Every October, LDA Iowa celebrates LD Awareness Month. We hope you were able to enjoy the free webinars, links to great apps, and a wealth of information shared on our website and social media!

LDA has developed a "31 Days of LD" calendar with a different theme for each of the five weeks in the month. The themes include: [Week 1: Connect and Network](#); [Week 2: Learn](#); [Week 3: Engage](#); [Week 4: Advocate](#); and [Week 5: Stay Connected](#).

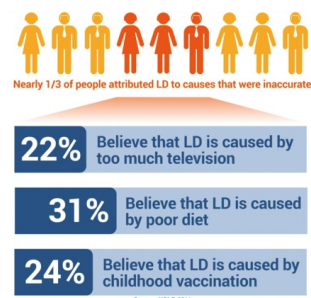
History

In 1985, President Ronald Reagan issued a [proclamation](#) designating October as National Learning Disabilities Month. The Learning Disabilities Association of America and its state affiliates (including LDA-IA) use this month to provide information about Specific Learning Disabilities.



Proclamation 5385—
National Learning
Disabilities Month, 1985

Ronald Reagan

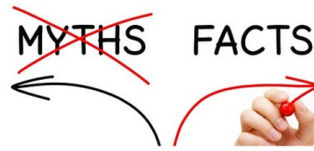


LDA visualizes a world in which Specific Learning Disabilities (SLD) are universally understood, so all individuals are accepted, supported and empowered to live a self-determined life - and we know we have a long way to go. Specific Learning Disability is the largest category of school-age children receiving special education services and we know that Specific Learning Disabilities have a persistent and lifelong impact that can have enormous consequences for individuals, our community and our economy.

A 2014 study reported that while over 3/4 of people in the United States see SLD as a growing issue, up to 1/3 attributed SLD to causes that were inaccurate. We know this needs to change and we work every day to help this happen.

Do you or someone you know have questions about Specific Learning Disabilities? If so, please contact us. We can help!

Debunking the Myths About Specific Learning Disabilities



How well can you tell the MYTHS from FACTS about Specific Learning Disabilities?

1. You can outgrow Specific Learning Disabilities
 - MYTH: Specific Learning Disabilities cannot be cured. They are lifelong.
2. Laziness causes Specific Learning Disabilities.
 - MYTH: Some individuals may avoid certain activities because they are harder, but that doesn't make them lazy.
3. Specific Learning Disabilities runs in families.
 - FACT: Many times a family member may also have a learning disability which can be passed on to the child.
4. **Not** reading to your toddler will cause Specific Learning Disabilities.
 - MYTH: While reading to your toddler is always a good activity, **not** reading to your toddler is **not** the cause of a Specific Learning Disability. Specific Learning Disabilities are neurological and affect the way the brain processes information.
5. Dyslexia is a type of Specific Learning Disability
 - FACT: Dyslexia is a reading disability that affects the way a person decodes and understands written language.

What are LDA America and LDA-IA doing to dispel the myths about Specific Learning Disabilities?

- LDA is informing policy makers
- LDA is disseminating information
- LDA is educating through an annual international conference
- LDA is hard at work every day to help individuals, both children and adults, reach their full potential

What can **you** do to help?

- Tell others about LDA
- Become a **member** of LDA
- Follow us on social media and "like" our **Facebook** page
- Donate to LDA Iowa and make sure every child and adult has the chance to dispel the myths about Specific Learning Disabilities
- **Donate** today! Every dollar is a step towards helping millions of individuals in the US to receive the support they need to lead a self-determined life

Membership



Did you know that by joining LDA Iowa, you are also a member of LDA America and have access to member-only status from each? Consider joining today! Why? We believe that every person with learning disabilities can succeed in school, at work, in relationships, and within the community -when provided the right supports and the right opportunities.

If you agree, you should look at the benefits of membership and help us to advocate for those impacted by learning disabilities and related disorders.

Why LDA?

- LDA is the voice for individuals with learning disabilities of all ages and their families.
- LDA is the leading advocate for laws and policies that create opportunities for individuals with learning disabilities.

- LDA is the only national organization to promote opportunities to meet others in the same situation through state affiliate membership.
- LDA is a leading source for information on learning disabilities, practical solutions, and a comprehensive network of resources at the national, state and local level.
- LDA is a support to individuals with learning disabilities, their families, educators and other professionals who serve the learning disability community.

[JOIN NOW](#) 

Benefits of Membership:

- A **Support System** through local and state affiliate representatives who are parents, educators, and professionals and understand the needs of the learning disabilities community.
- A **Community Forum** available only to members to ask questions and get answers from experts and other individuals who may have had the same experiences.
- A **Policy Director** who advocates in the best interest of LDA's members.
- An Advocacy program that provides legislative updates, advocacy training materials and LDA's position on many LD related topics that affect our members.
- A **Resource** and wealth of information on our website for parents, educators, adults and professionals to help navigate through the LD maze.
- A **Guide** for those "New to LD," a source of information on diagnosis, assessment, and evaluation, and how to navigate the school system.
- Our exclusive, downloadable e-book for parents - "**What Every Parent Needs to Know about Learning Disabilities.**"
- **LDA Today** - A bi-monthly electronic newsletter for members-only with up-to-date information on learning disabilities and topics of interest, including advocacy efforts.
- **News briefings** of the week's top stories on learning disabilities and related topics via **THE LD SOURCE**, a free, opt-in (weekly) e-mail resource.
- **News from Washington**- monthly reports on legislative issues via **LDA Legislative News**
- A **Discount** at state and national conferences that feature leading-edge speakers as well as experienced, knowledgeable and thought-provoking presenters to conference attendees as well as an exhibit hall with vendors dedicated to serving the learning disabilities community.
- A **Discount Subscription** to *Learning Disabilities: A Multidisciplinary Journal*, a peer-reviewed journal published quarterly. Please visit [Sagamore Publishing](#) to subscribe or for more details.
- A **Direct Information** line via a toll-free call-in line, (888) 300-6710.
- Submit manuscripts in LDA's nationally-recognized and research-based peer-reviewed journal, *Learning Disabilities: A Multidisciplinary Journal*
- Possible professional opportunities include being considered to serve on editorial board for *Learning Disabilities: A Multidisciplinary Journal* or nominated to serve on LDA's Professional Advisory Board that serves as a resource and counsel on issues affecting individuals with LD.

[JOIN NOW](#) 

Why is Membership Important?

As an advocacy organization, membership is what keeps LDA thriving and allows our voices and those of the children and families whom we serve to be heard. The support we receive through membership in LDA enables us to:

- Unite individuals, families and professionals who have a shared commitment to individuals with learning disabilities.
- Raise awareness about learning disabilities among policymakers and the public at large.
- Advocate to preserve, enhance and expand access to services for children and adults with learning disabilities.
- Represent the needs and interests of children and adults with learning disabilities to regulatory and policy-making entities.
- Create and distribute policy and position statements and public testimony on various aspects of policies that impact the lives of children and adults with learning disabilities.
- Develop Action Alerts on crucial national legislation.
- Collaborate with professional and advocacy organizations on public policy at the national level.

LDA never shares or sells membership information!

JOIN NOW 

